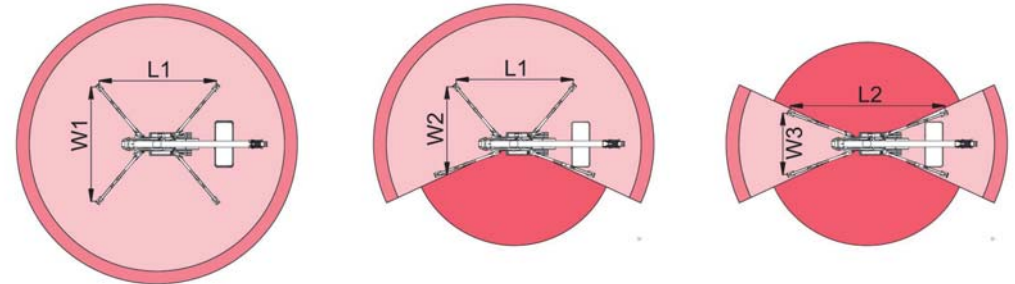
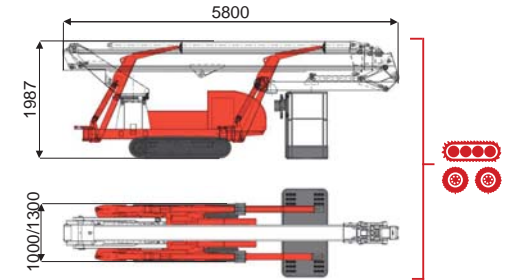
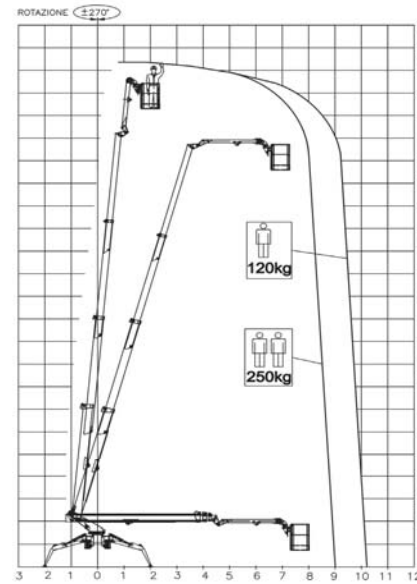




22,3 m ↑  
10,3 m →  
250 Kg 👤 👤



9000 mm	10300 mm	5500 mm	L1	L2	W1	W2	W3
250 kg	120 kg	120/250 kg	4900 mm	6250 mm	4350 mm	3350 mm	2750 mm

BI-ENERGY  
Diesel+AC



TSJ 23.1/C-R 22.3 m 10,3 m 250 kg 175° 540° 150x70 cm 90°+80° 2,75-4,35 m 36% 25% 2,25 km/h 3100 kg 19 kN 1,56 kN/m<sup>2</sup> 3,26 kN/m<sup>2</sup> 1000/1300 mm 5817 mm 1970 mm

	Battery type	Battery charge	Add. Weight	Autonomy	Charging time	Electropump	
ECO	DC+AC	48V 320 A/h	230V-48V 45A	450 kg	6-7 h endless	7h	48V 9 kW
ECO	DC+AC	48V 270 A/h	230V-48V 45A	400 kg	6-7 h endless	7h	48V 9 kW
HYBRID	Diesel+DC	24V 240 A/h	230V-24V 35A	200 kg	2-3 h endless	7h	24V 5,5 kW

Characteristics and technical data are informative only and subjected to change without notice.